

**The KENYA INSTITUTE for PUBLIC
POLICY RESEARCH and ANALYSIS**

CREATING AN ENABLING ENVIRONMENT FOR PRIVATE SECTOR (CEEP)

A KIPPRRA TRAINING PROGRAMME

KIPPRRA is a public think tank with the mandate of developing capacities for policy formulation, implementation and evaluation within National and County governments; undertaking relevant and timely policy research and analysis; serve as a point of policy engagement and communication on public policy; and developing and maintaining a reservoir of knowledge on public policy in contributing to the achievement of national development goals.

Creating an enabling environment for private sector training programme is therefore focused on strengthening the capacity of government officers at county level in articulating key priorities in providing an enabling environment to grow private sector economic activity.

With the devolved system of government counties have a significant role to play in national development, expanding livelihood opportunities for the communities and enabling private sector participation in the development agenda. It is therefore necessary that they make the right policies and prioritize interventions.

For more information, contact

Kenya Institute For Public Policy Research And Analysis

2nd Floor, Bishops Garden Towers, Bishops Road

P.O BOX 56445-00200, Nairobi

Tel: +254 20 4936000, +254 20 2719933/4

Cell: +254736 712724, +254724 256078

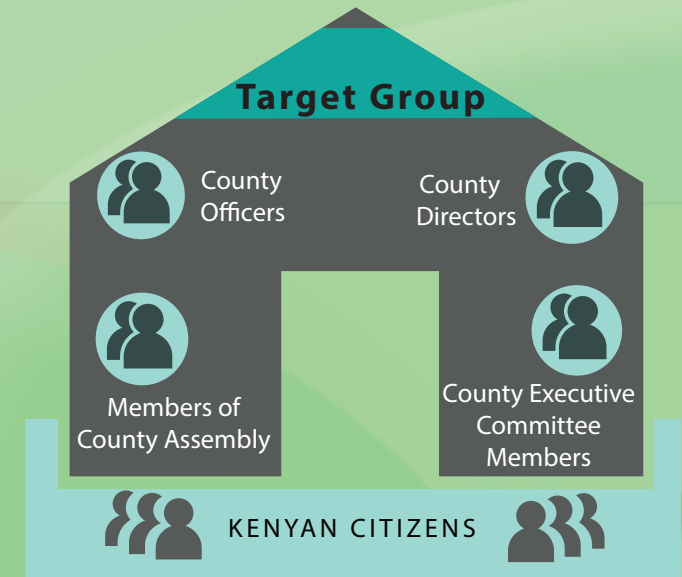
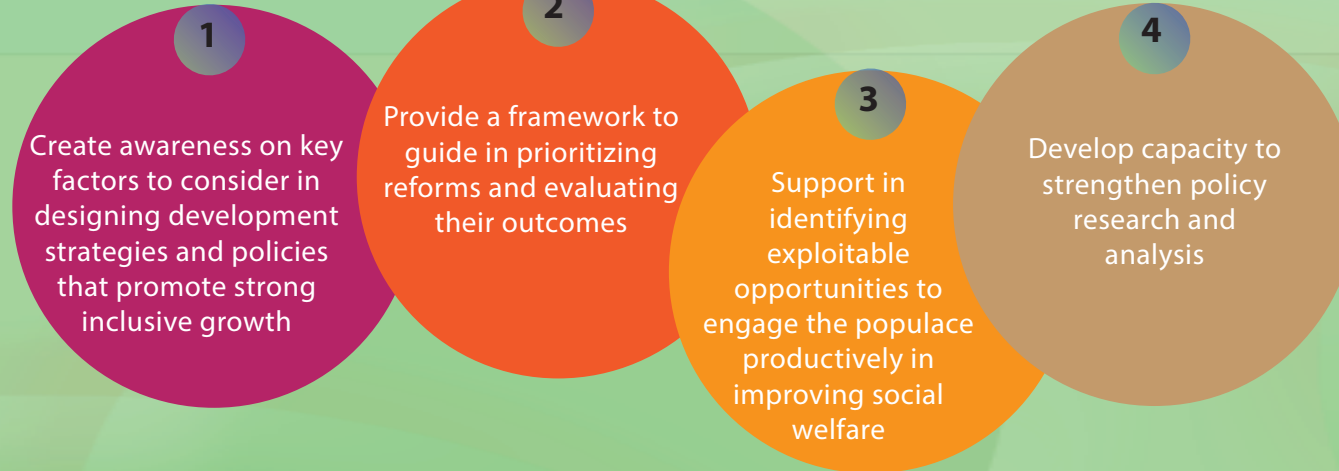
Fax: +254 20 272719951

Email: admin@kippra.or.ke

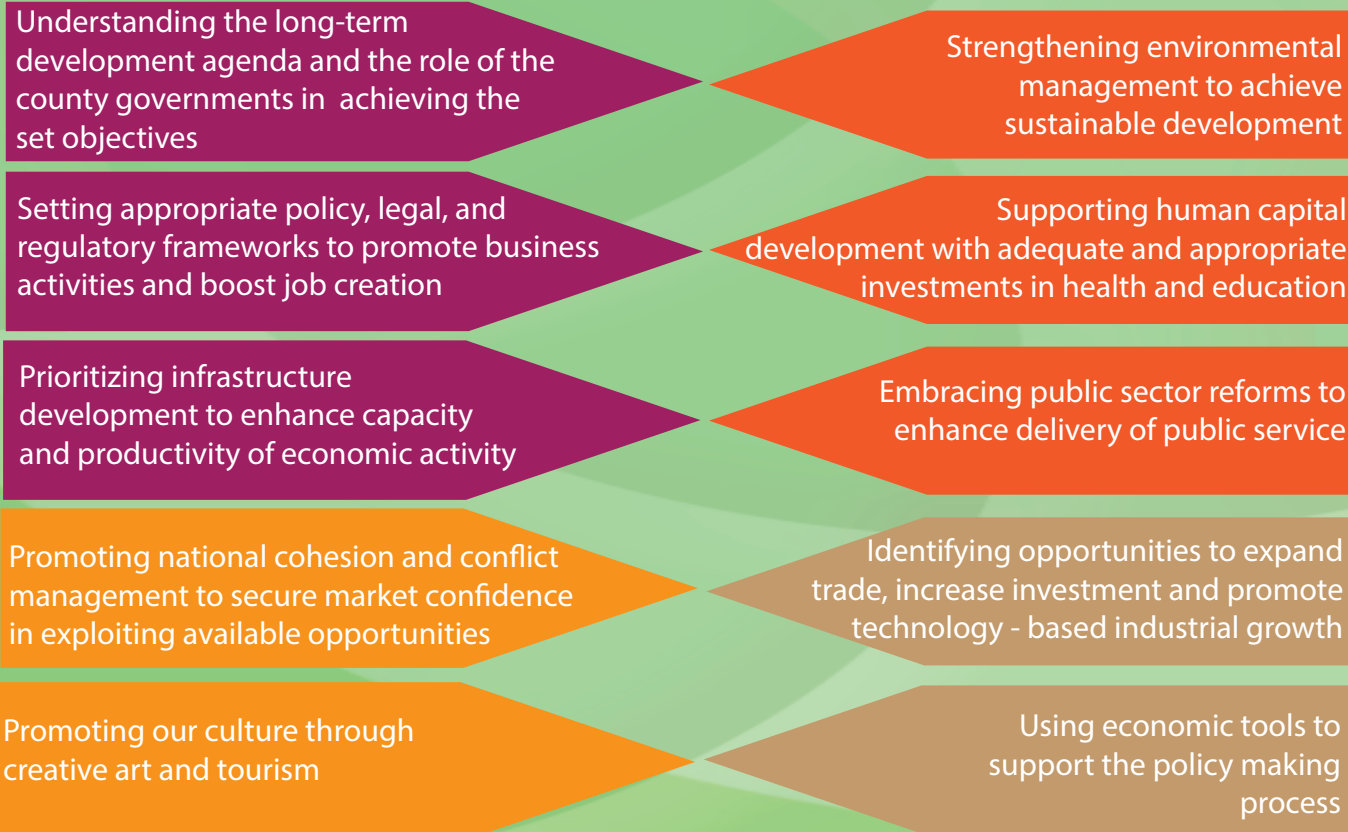
Website: www.kippra.org

Twitter: [@kipprake](https://twitter.com/kipprake)

Specific objectives of the training programme



Scope of the Training Programme



Mode of Delivery

- Annual calendar of training (but with flexibility)
- Presentations
- Group discussions
- Case studies
- Documentaries, among others

Duration

4 days To cover all the modules adequately

FACILITATION

Highly experienced researchers from KIPPRRA offer the training programme. Participants attending the course are expected to meet all costs related to the training